

## **Harriet Rd between Burnside Rd W and Gorge Rd W**

**October 28, 2019 To October 31, 2019**



The data presented here is for information purposes only and should not be considered authoritative for construction, geotechnical, engineering, navigational, legal, or other site-specific uses. The information shared is owned by the Transportation Division of the Engineering Department at the District of Saanich. Accuracy is not guaranteed.

Start Date: 28-Oct-19  
 Start Time: 0:00  
 Station ID: M0020-01

**Location 1: Harriet Rd between Burnside Rd W and Gorge Rd W**

Note:

DATE:	October 28, 2019		October 29, 2019		October 30, 2019		October 31, 2019		November 1, 2019		WK AVG		WK AVG	HOURLY
	MON		TUE		WED		THURS		FRI				CH 1+2	%
Time:	NB	SB	NB	SB	NB	SB	NB	SB	NB	SB	NB	SB		
12-1 AM			16	17	17	23	12	17			15	19	34	0.4%
1-2 AM			13	12	12	12	10	20			12	15	26	0.3%
2-3 AM			6	6	5	10	5	3			5	6	12	0.1%
3-4 AM			10	7	10	7	9	7			10	7	17	0.2%
4-5 AM			19	14	14	12	18	14			17	13	30	0.3%
5-6 AM			42	37	39	28	49	36			43	34	77	0.9%
6-7 AM			171	145	151	176	141	149			154	157	311	3.5%
7-8 AM			350	262	318	233	335	241			334	245	580	6.4%
8-9 AM			478	275	458	213	466	227			467	238	706	7.8%
9-10 AM			322	297	308	200	322	199			317	232	549	6.1%
10-11 AM			274	247	251	207	259	234			261	229	491	5.5%
11-12 PM			284	283	235	272	282	264			267	273	540	6.0%
12-1 PM			260	302	334	310	314	262			303	291	594	6.6%
1-2 PM			282	261	284	307	314	242			293	270	563	6.3%
2-3 PM			322	280	328	294	347	307			332	294	626	7.0%
3-4 PM			428	383	393	321	407	335			409	346	756	8.4%
4-5 PM			507	421	462	407	479	409			483	412	895	9.9%
5-6 PM			369	376	361	367	338	347			356	363	719	8.0%
6-7 PM			208	290	238	328	143	195			196	271	467	5.2%
7-8 PM			147	196	160	214	123	149			143	186	330	3.7%
8-9 PM			110	131	140	184	103	135			118	150	268	3.0%
9-10 PM			75	103	116	138	83	86			91	109	200	2.2%
10-11 PM			59	83	77	73	54	49			63	68	132	1.5%
11-12 AM			30	39	38	46	32	38			33	41	74	0.8%
<b>LANES</b>			<b>4782</b>	<b>4467</b>	<b>4749</b>	<b>4382</b>	<b>4645</b>	<b>3965</b>			<b>4725</b>	<b>4271</b>	<b>8997</b>	<b>100.0%</b>
<b>TOTAL</b>			<b>9249</b>		<b>9131</b>		<b>8610</b>				<b>9000</b>			
	MON		TUE		WED		THURS		FRI		WK AVG			

PEAK HOUR					TOTAL VEHICALS-PEAK PERIODS		2 HOUR PEAK INTERVALS			
MAX. 7 - 9 am PEAK HOUR	706	⇒	7.8%	between 8-9 AM	4034	⇒ 6 HR TOTAL	<b>2 HR AM (7 - 9 AM)</b>			
MAX. 7 - 11 am PEAK HOUR	706	⇒	7.8%	between 8-9 AM	2900	⇒ 4 HR TOTAL	VEH / HR	VEH / 2HR	2 HR %	
							7-8 AM	580	1285	14.3%
							8-9 AM	706		
MAX. 11 am - 1 pm PEAK HOUR	594	⇒	6.6%	between 12-1 PM	<b>24 HOUR FACTORS</b>					
MAX. 11 am - 3 pm PEAK HOUR	626	⇒	7.0%	between 2-3 PM						
MAX. 4 - 6 pm PEAK HOUR	895	⇒	9.9%	between 4-5 PM						
MAX. 3 - 6 pm PEAK HOUR	895	⇒	9.9%	between 4-5 PM	2.23	⇒ 6-24 HR FACT.	<b>2 HR NOON (11 - 1 PM)</b>			
					3.10	⇒ 4-24 HR FACT.	VEH / HR	VEH / 2HR	2 HR %	
							11-12 PM	540	1134	12.6%
							12-1 PM	594		
							<b>2 HR PM (4 - 6 PM)</b>			
							VEH / HR	VEH / 2HR	2 HR %	
							4-5 PM	895	1614	17.9%
							5-6 PM	719		

# Harriet Rd between Burnside Rd W and Gorge Rd W

Northbound

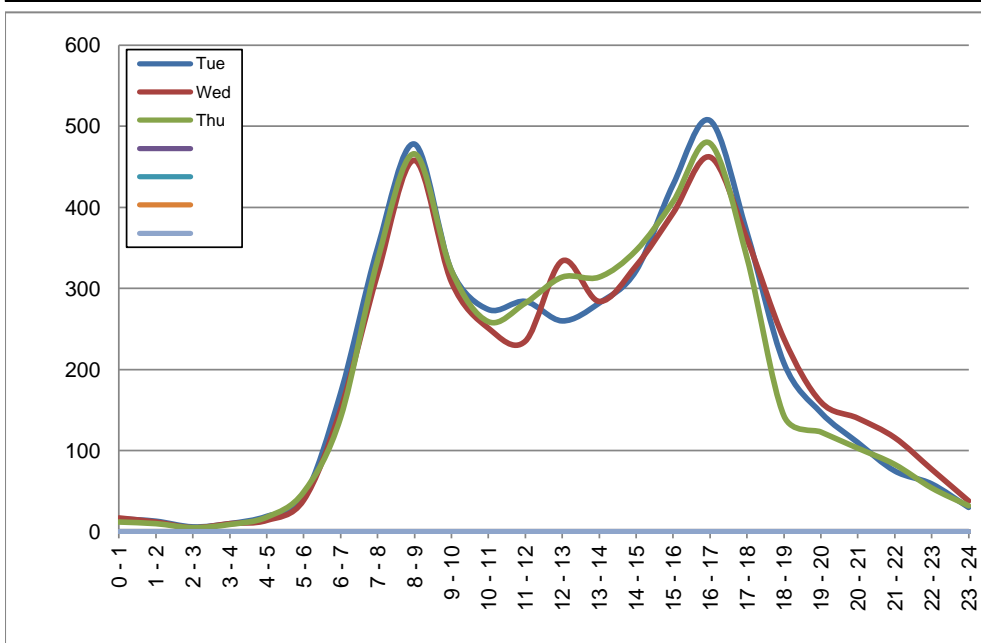
October 29, 2019 to October 31, 2019

## Hourly Volumes

Time Period	Tue	Wed	Thu			
	Oct 29	Oct 30	Oct 31			
0 - 1	16	17	12			
1 - 2	13	12	10			
2 - 3	6	5	5			
3 - 4	10	10	9			
4 - 5	19	14	18			
5 - 6	42	39	49			
6 - 7	171	151	141			
7 - 8	350	318	335			
8 - 9	478	458	466			
9 - 10	322	308	322			
10 - 11	274	251	259			
11 - 12	284	235	282			
12 - 13	260	334	314			
13 - 14	282	284	314			
14 - 15	322	328	347			
15 - 16	428	393	407			
16 - 17	507	462	479			
17 - 18	369	361	338			
18 - 19	208	238	143			
19 - 20	147	160	123			
20 - 21	110	140	103			
21 - 22	75	116	83			
22 - 23	59	77	54			
23 - 24	30	38	32			
<b>Day Total</b>	<b>4782</b>	<b>4749</b>	<b>4645</b>			

## 15-Minute Volumes

Time Start	Tue	Wed	Thu				Time Start	Tue	Wed	Thu			
	Oct 29	Oct 30	Oct 31					Oct 29	Oct 30	Oct 31			
0:00	2	3	1				12:00	74	83	73			
0:15	7	4	3				12:15	65	83	83			
0:30	2	5	4				12:30	68	80	78			
0:45	5	5	4				12:45	53	88	80			
1:00	3	3	2				13:00	81	63	89			
1:15	4	2	4				13:15	70	80	62			
1:30	3	4	3				13:30	61	63	74			
1:45	3	3	1				13:45	70	78	89			
2:00	2	0	1				14:00	75	89	91			
2:15	3	0	0				14:15	77	81	78			
2:30	0	3	1				14:30	74	94	84			
2:45	1	2	3				14:45	96	64	94			
3:00	2	1	3				15:00	101	86	92			
3:15	1	2	1				15:15	101	95	105			
3:30	2	4	3				15:30	115	124	112			
3:45	5	3	2				15:45	111	88	98			
4:00	4	4	3				16:00	124	123	121			
4:15	4	2	2				16:15	135	110	119			
4:30	4	4	7				16:30	124	122	122			
4:45	7	4	6				16:45	124	107	117			
5:00	1	1	3				17:00	118	96	103			
5:15	11	13	9				17:15	102	90	120			
5:30	17	13	20				17:30	81	76	67			
5:45	13	12	17				17:45	68	99	48			
6:00	25	9	27				18:00	53	64	33			
6:15	38	40	28				18:15	61	58	35			
6:30	49	44	37				18:30	48	54	38			
6:45	59	58	49				18:45	46	62	37			
7:00	58	56	64				19:00	35	54	32			
7:15	59	61	66				19:15	37	35	27			
7:30	111	96	92				19:30	40	40	34			
7:45	122	105	113				19:45	35	31	30			
8:00	128	120	116				20:00	22	44	27			
8:15	134	123	117				20:15	33	33	25			
8:30	120	108	128				20:30	22	33	28			
8:45	96	107	105				20:45	33	30	23			
9:00	98	80	75				21:00	22	38	27			
9:15	73	73	76				21:15	16	30	18			
9:30	82	77	82				21:30	19	25	22			
9:45	69	78	89				21:45	18	23	16			
10:00	72	74	62				22:00	17	22	18			
10:15	65	54	73				22:15	15	21	15			
10:30	74	47	68				22:30	15	19	13			
10:45	63	76	56				22:45	12	15	8			
11:00	55	57	60				23:00	11	13	8			
11:15	68	63	71				23:15	6	4	10			
11:30	80	54	72				23:30	7	11	9			
11:45	81	61	79				23:45	6	10	5			



Site notes:

# Harriet Rd between Burnside Rd W and Gorge Rd W

Southbound

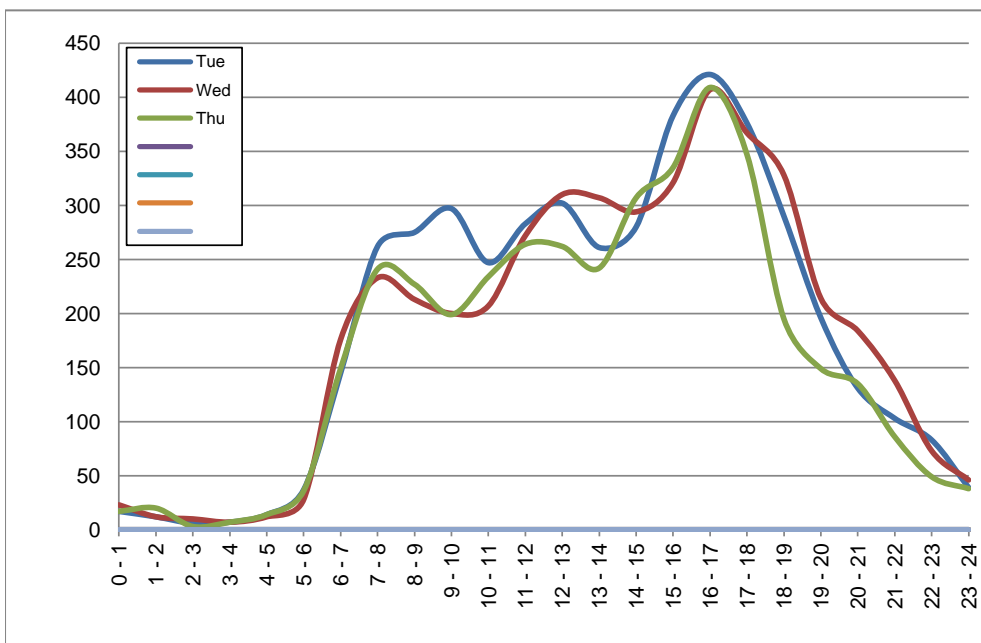
October 29, 2019 to October 31, 2019

## Hourly Volumes

Time Period	Tue	Wed	Thu				
	Oct 29	Oct 30	Oct 31				
0 - 1	17	23	17				
1 - 2	12	12	20				
2 - 3	6	10	3				
3 - 4	7	7	7				
4 - 5	14	12	14				
5 - 6	37	28	36				
6 - 7	145	176	149				
7 - 8	262	233	241				
8 - 9	275	213	227				
9 - 10	297	200	199				
10 - 11	247	207	234				
11 - 12	283	272	264				
12 - 13	302	310	262				
13 - 14	261	307	242				
14 - 15	280	294	307				
15 - 16	383	321	335				
16 - 17	421	407	409				
17 - 18	376	367	347				
18 - 19	290	328	195				
19 - 20	196	214	149				
20 - 21	131	184	135				
21 - 22	103	138	86				
22 - 23	83	73	49				
23 - 24	39	46	38				
<b>Day Total</b>	<b>4467</b>	<b>4382</b>	<b>3965</b>				

## 15-Minute Volumes

Time Start	Tue	Wed	Thu				
	Oct 29	Oct 30	Oct 31				
0:00	1	5	7				
0:15	6	3	5				
0:30	5	8	3				
0:45	5	7	2				
1:00	8	4	3				
1:15	3	2	6				
1:30	0	1	7				
1:45	1	5	4				
2:00	3	2	0				
2:15	2	5	0				
2:30	1	2	2				
2:45	0	1	1				
3:00	0	3	0				
3:15	2	1	2				
3:30	4	1	4				
3:45	1	2	1				
4:00	3	2	3				
4:15	2	2	4				
4:30	1	4	0				
4:45	8	4	7				
5:00	11	5	7				
5:15	7	12	8				
5:30	10	5	7				
5:45	9	6	14				
6:00	22	20	18				
6:15	19	27	32				
6:30	34	51	38				
6:45	70	78	61				
7:00	53	48	49				
7:15	69	66	58				
7:30	73	58	65				
7:45	67	61	69				
8:00	65	59	49				
8:15	53	45	58				
8:30	67	58	58				
8:45	90	51	62				
9:00	99	48	57				
9:15	74	52	44				
9:30	70	50	46				
9:45	54	50	52				
10:00	57	44	53				
10:15	56	45	56				
10:30	74	55	64				
10:45	60	63	61				
11:00	70	65	56				
11:15	75	67	60				
11:30	62	74	67				
11:45	76	66	81				
12:00	70	77	72				
12:15	73	82	50				
12:30	78	70	70				
12:45	81	81	70				
13:00	65	73	70				
13:15	67	70	56				
13:30	59	69	51				
13:45	70	95	65				
14:00	73	74	76				
14:15	61	56	76				
14:30	64	80	72				
14:45	82	84	83				
15:00	102	82	86				
15:15	101	81	83				
15:30	77	73	82				
15:45	103	85	84				
16:00	110	97	109				
16:15	100	90	96				
16:30	105	108	94				
16:45	106	112	110				
17:00	96	104	107				
17:15	96	86	99				
17:30	100	89	82				
17:45	84	88	59				
18:00	78	90	46				
18:15	79	92	45				
18:30	61	80	64				
18:45	72	66	40				
19:00	59	58	46				
19:15	56	70	46				
19:30	45	43	26				
19:45	36	43	31				
20:00	33	55	42				
20:15	43	59	30				
20:30	33	37	29				
20:45	22	33	34				
21:00	31	43	34				
21:15	24	29	22				
21:30	22	34	18				
21:45	26	32	12				
22:00	36	21	10				
22:15	18	21	9				
22:30	13	17	19				
22:45	16	14	11				
23:00	11	17	15				
23:15	16	12	6				
23:30	7	11	10				
23:45	5	6	7				



Site notes:

# Vehicle Speed Summary

Saanich Engineering Department

Count Id: [M0020-01](#)

Filename: [Harriet Rd between Burnside Rd W and Gorge Rd W-Oct-2019.xlsm](#)

**Location:** Harriet Rd between Burnside Rd W and Gorge Rd W

Note:

Direction: **North-South**

Dates: **October 28, 2019 To October 31, 2019**

*Filtered data*

AVG. SPEED	<b>30</b> mph	<b>48</b> km/h
50 % SPEED	<b>30</b> mph	<b>48</b> km/h
85 % SPEED	<b>34</b> mph	<b>55</b> km/h
95 % SPEED	<b>37</b> mph	<b>59</b> km/h

Location Map



**Harriet Rd between Burnside Rd W and Gorge Rd W**

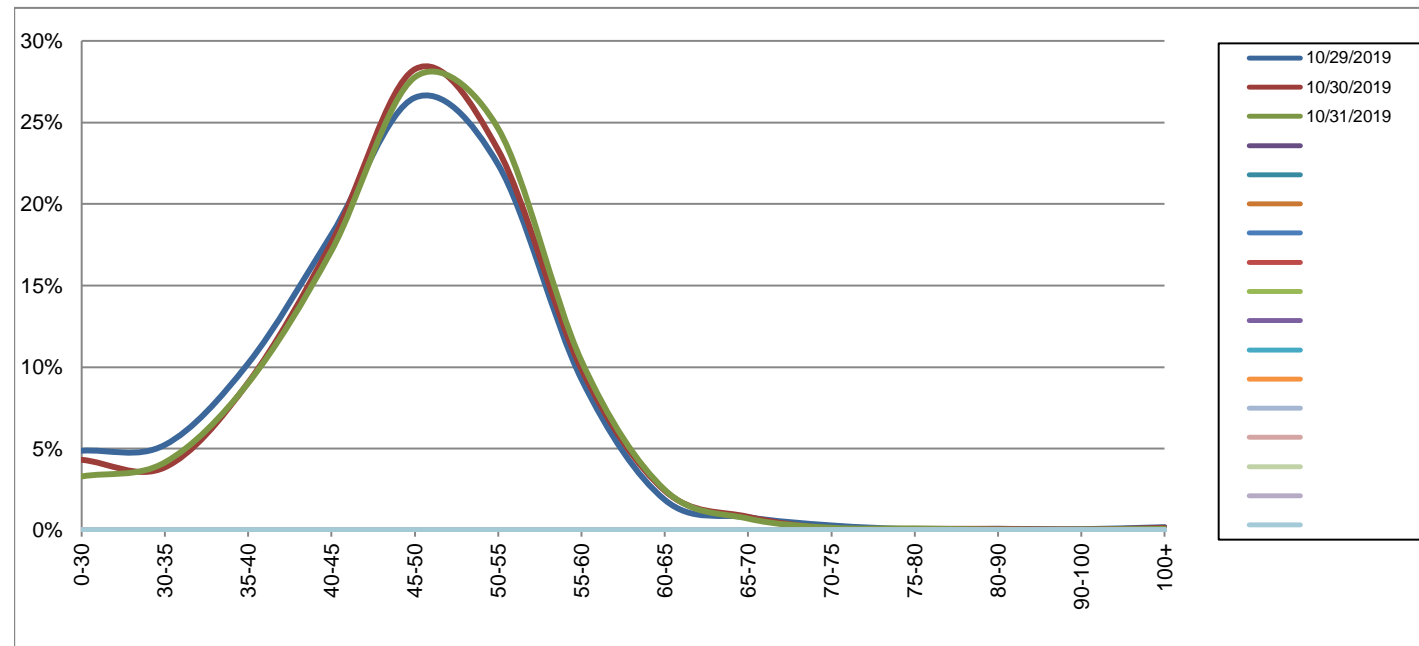
Northbound

October 29, 2019 to October 31, 2019

Daily Speed Bin Percentages															Daily Speed Bin Volumes														Total	Avg.
Bin #	1	2	3	4	5	6	7	8	9	10	11	12	13	14	1	2	3	4	5	6	7	8	9	10	11	12	13	14	Volume	Speed
Bin Speeds	0-30	30-35	35-40	40-45	45-50	50-55	55-60	60-65	65-70	70-75	75-80	80-90	90-100	100+	0-30	30-35	35-40	40-45	45-50	50-55	55-60	60-65	65-70	70-75	75-80	80-90	90-100	100+		
10/29/2019	4.9%	5.2%	10.2%	18.1%	26.5%	22.4%	9.3%	1.9%	0.8%	0.3%	0.1%	0.1%	0.1%	0.2%	233	250	489	867	1268	1072	443	89	38	14	3	4	3	9	4782	46
10/30/2019	4.3%	3.9%	9.1%	17.6%	28.3%	23.3%	9.9%	2.4%	0.8%	0.1%	0.1%	0.1%	0.0%	0.1%	205	183	430	837	1342	1107	469	115	39	5	4	4	2	7	4749	47
10/31/2019	3.3%	4.2%	9.0%	17.1%	27.8%	24.6%	10.4%	2.5%	0.7%	0.2%	0.1%	0.0%	0.0%	0.1%	153	193	419	796	1290	1144	482	115	33	7	5	2	2	4	4645	47
<b>Total</b>	4.2%	4.4%	9.4%	17.6%	27.5%	23.4%	9.8%	2.3%	0.8%	0.2%	0.1%	0.1%	0.0%	0.1%	591	626	1338	2500	3900	3323	1394	319	110	26	12	10	7	20	14176	47

**Speed Data Summary**

Bin #	1	2	3	4	5	6	7	8	9	10	11	12	13	14	Total
Bin Speeds	0-30	30-35	35-40	40-45	45-50	50-55	55-60	60-65	65-70	70-75	75-80	80-90	90-100	100+	
Survey Total	591	626	1338	2500	3900	3323	1394	319	110	26	12	10	7	20	14176
% Total	4.2%	4.4%	9.4%	17.6%	27.5%	23.4%	9.8%	2.3%	0.8%	0.2%	0.1%	0.1%	0.0%	0.1%	100%
Accumulated %	4.2%	8.6%	18.0%	35.7%	63.2%	86.6%	96.4%	98.7%	99.5%	99.7%	99.7%	99.8%	99.9%	100%	
Inverse Accum. %	95.8%	91.4%	82.0%	64.3%	36.8%	13.4%	3.6%	1.3%	0.5%	0.3%	0.3%	0.2%	0.1%	0.0%	
Average Speed	47 KM/H														



Site notes:

**Harriet Rd between Burnside Rd W and Gorge Rd W**

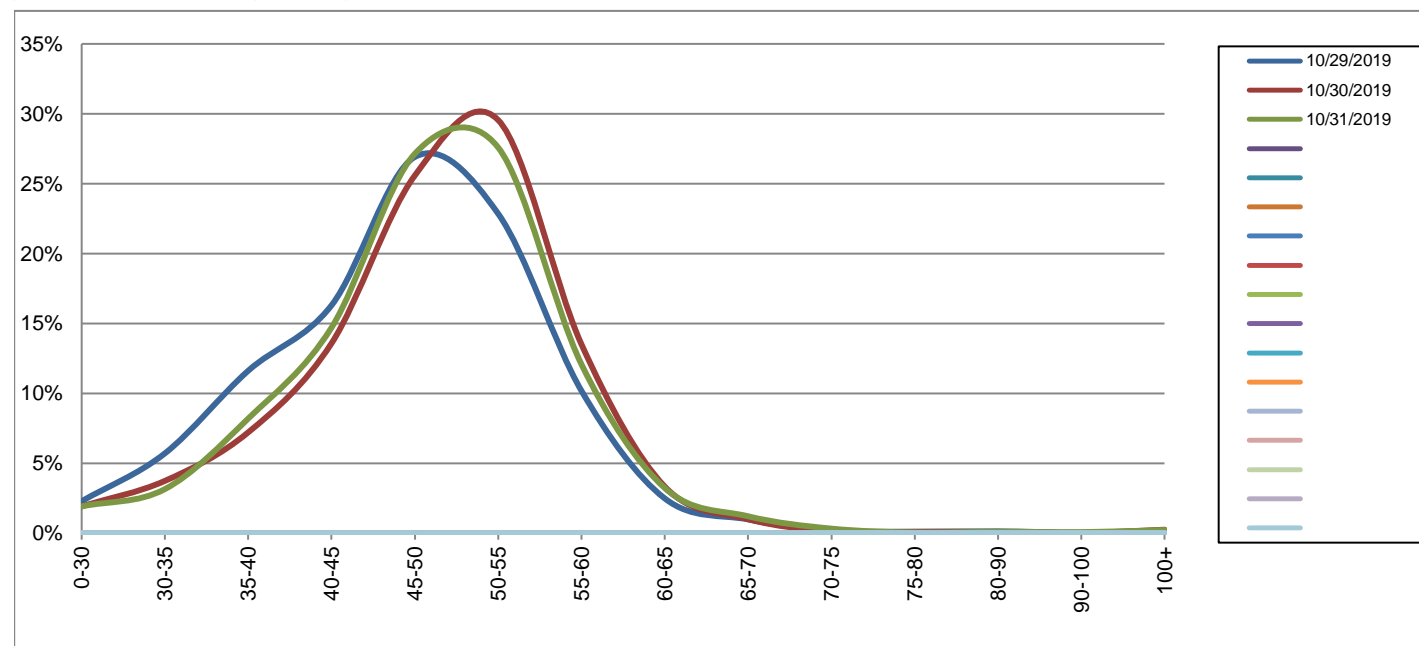
Southbound

October 29, 2019 to October 31, 2019

Daily Speed Bin Percentages															Daily Speed Bin Volumes														Total	Avg.
Bin #	1	2	3	4	5	6	7	8	9	10	11	12	13	14	1	2	3	4	5	6	7	8	9	10	11	12	13	14	Volume	Speed
Bin Speeds	0-30	30-35	35-40	40-45	45-50	50-55	55-60	60-65	65-70	70-75	75-80	80-90	90-100	100+	0-30	30-35	35-40	40-45	45-50	50-55	55-60	60-65	65-70	70-75	75-80	80-90	90-100	100+		
10/29/2019	2.3%	5.7%	11.6%	16.3%	26.9%	22.9%	10.2%	2.5%	1.0%	0.2%	0.1%	0.1%	0.0%	0.2%	102	255	519	728	1202	1021	455	111	44	8	5	6	2	9	4467	47
10/30/2019	1.9%	3.7%	7.2%	13.6%	25.6%	29.6%	13.5%	3.3%	1.0%	0.1%	0.1%	0.1%	0.0%	0.3%	84	164	316	595	1121	1295	592	146	44	6	4	4	0	11	4382	49
10/31/2019	1.9%	3.2%	8.2%	14.7%	27.1%	27.6%	12.1%	3.2%	1.2%	0.3%	0.1%	0.1%	0.1%	0.2%	76	125	325	583	1076	1094	479	128	48	13	2	4	3	9	3965	48
<b>Total</b>	2.0%	4.2%	9.1%	14.9%	26.5%	26.6%	11.9%	3.0%	1.1%	0.2%	0.1%	0.1%	0.0%	0.2%	262	544	1160	1906	3399	3410	1526	385	136	27	11	14	5	29	12814	48

**Speed Data Summary**

Bin #	1	2	3	4	5	6	7	8	9	10	11	12	13	14	Total
Bin Speeds	0-30	30-35	35-40	40-45	45-50	50-55	55-60	60-65	65-70	70-75	75-80	80-90	90-100	100+	
Survey Total	262	544	1160	1906	3399	3410	1526	385	136	27	11	14	5	29	12814
% Total	2.0%	4.2%	9.1%	14.9%	26.5%	26.6%	11.9%	3.0%	1.1%	0.2%	0.1%	0.1%	0.0%	0.2%	100%
Accumulated %	2.0%	6.3%	15.3%	30.2%	56.7%	83.4%	95.3%	98.3%	99.3%	99.5%	99.6%	99.7%	99.8%	100%	
Inverse Accum. %	98.0%	93.7%	84.7%	69.8%	43.3%	16.6%	4.7%	1.7%	0.7%	0.5%	0.4%	0.3%	0.2%	0.0%	
Average Speed	48 KM/H														



Site notes:



Harriet Rd between Burnside Rd W and Gorge Rd W

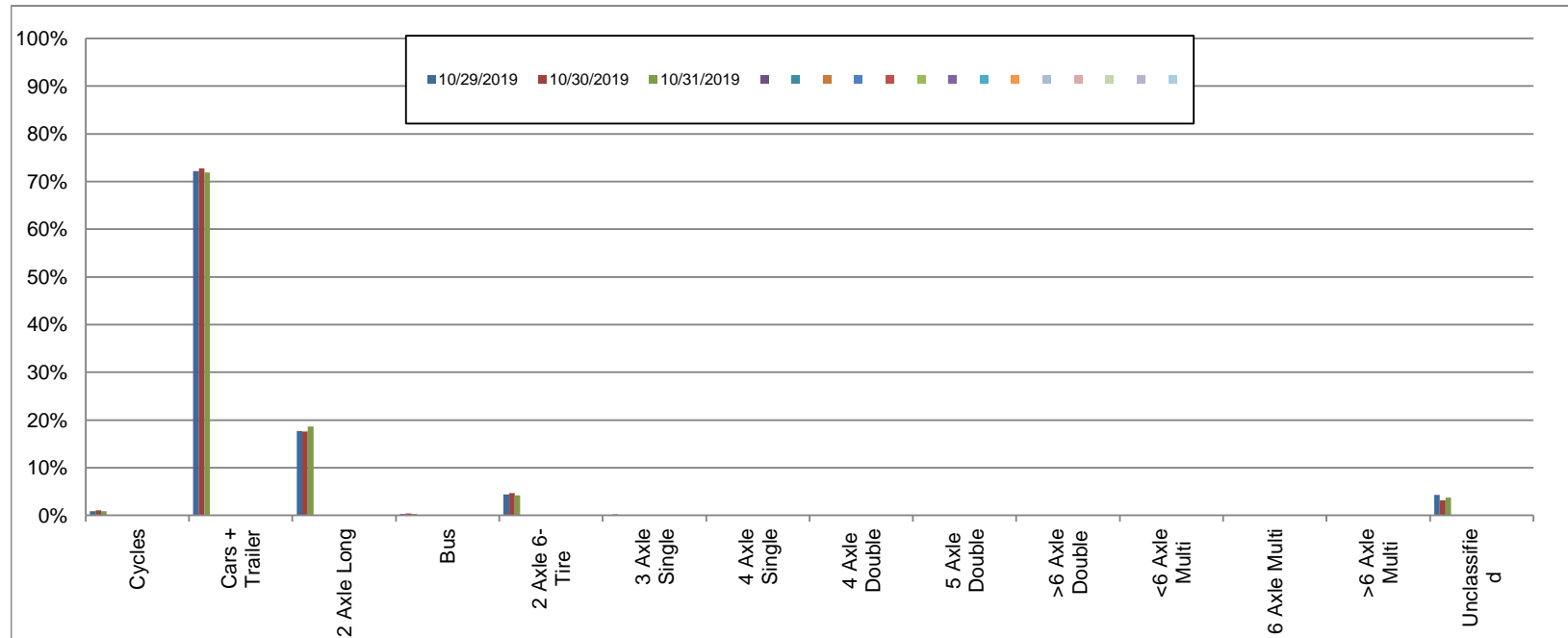
Northbound

October 29, 2019 to October 31, 2019

Daily Class Bin Percentages															Daily Class Bin Volumes														
Bin #	1	2	3	4	5	6	7	8	9	10	11	12	13	14	1	2	3	4	5	6	7	8	9	10	11	12	13	14	Total Volume
Bin Class	Cycles	Cars + Trailer	2 Axle Long	Bus	2 Axle 6-Tire	3 Axle Single	4 Axle Single	4 Axle Double	5 Axle Double	>6 Axle Double	<6 Axle Multi	6 Axle Multi	>6 Axle Multi	Unclassified	Cycles	Cars + Trailer	2 Axle Long	Bus	2 Axle 6-Tire	3 Axle Single	4 Axle Single	4 Axle Double	5 Axle Double	>6 Axle Double	<6 Axle Multi	6 Axle Multi	>6 Axle Multi	Unclassified	
10/29/2019	0.9%	72.2%	17.7%	0.3%	4.3%	0.1%	0.0%	0.1%	0.1%	0.0%	0.0%	0.0%	0.0%	4.3%	43	3451	845	14	208	7	0	6	4	0	0	0	0	204	4782
10/30/2019	1.1%	72.8%	17.6%	0.4%	4.7%	0.2%	0.0%	0.1%	0.1%	0.0%	0.0%	0.0%	0.0%	3.1%	52	3457	837	17	221	10	0	3	3	0	0	0	0	149	4749
10/31/2019	0.9%	71.9%	18.6%	0.3%	4.2%	0.1%	0.0%	0.1%	0.0%	0.0%	0.0%	0.0%	0.0%	3.7%	41	3341	866	15	197	5	1	6	1	1	0	0	0	171	4645
<b>Total</b>	<b>1.0%</b>	<b>72.3%</b>	<b>18.0%</b>	<b>0.3%</b>	<b>4.4%</b>	<b>0.2%</b>	<b>0.0%</b>	<b>0.1%</b>	<b>0.1%</b>	<b>0.0%</b>	<b>0.0%</b>	<b>0.0%</b>	<b>0.0%</b>	<b>3.7%</b>	<b>136</b>	<b>10249</b>	<b>2548</b>	<b>46</b>	<b>626</b>	<b>22</b>	<b>1</b>	<b>15</b>	<b>8</b>	<b>1</b>	<b>0</b>	<b>0</b>	<b>0</b>	<b>524</b>	<b>14176</b>

Class Data Summary

Bin #	1	2	3	4	5	6	7	8	9	10	11	12	13	14	Total Volume
Bin Class	Cycles	Cars + Trailer	2 Axle Long	Bus	2 Axle 6-Tire	3 Axle Single	4 Axle Single	4 Axle Double	5 Axle Double	>6 Axle Double	<6 Axle Multi	6 Axle Multi	>6 Axle Multi	Unclassified	Total Volume
<b>Survey Total</b>	136	10249	2548	46	626	22	1	15	8	1	0	0	0	524	14176
<b>% Total</b>	1.0%	72.3%	18.0%	0.3%	4.4%	0.2%	0.0%	0.1%	0.1%	0.0%	0.0%	0.0%	0.0%	3.7%	100%
<b>Accumulated %</b>	1.0%	73.3%	91.2%	91.6%	96.0%	96.1%	96.1%	96.2%	96.3%	96.3%	96.3%	96.3%	96.3%	100.0%	
<b>Inv. Accum. %</b>	99.0%	26.7%	8.8%	8.4%	4.0%	3.9%	3.9%	3.8%	3.7%	3.7%	3.7%	3.7%	3.7%	0.0%	



Classification Descriptions

Bin #	Bin Description
1	Motorcycles
2	Passenger cars, including those with recreational trailers
3	2-axle pick-ups, vans, and RVs, including those with recreational trailers
4	Buses
5	2-axle, 6-tire single units
6	3-axle single units
7	4-axle single units
8	3-axle or 4-axle double unit
9	5-axle double unit
10	6-, 7-, or 8-axle double unit
11	5-axle multiple unit
12	6-axle multiple unit
13	7-or-more-axle multiple unit
14	Vehicles that could not be classified

Site notes:



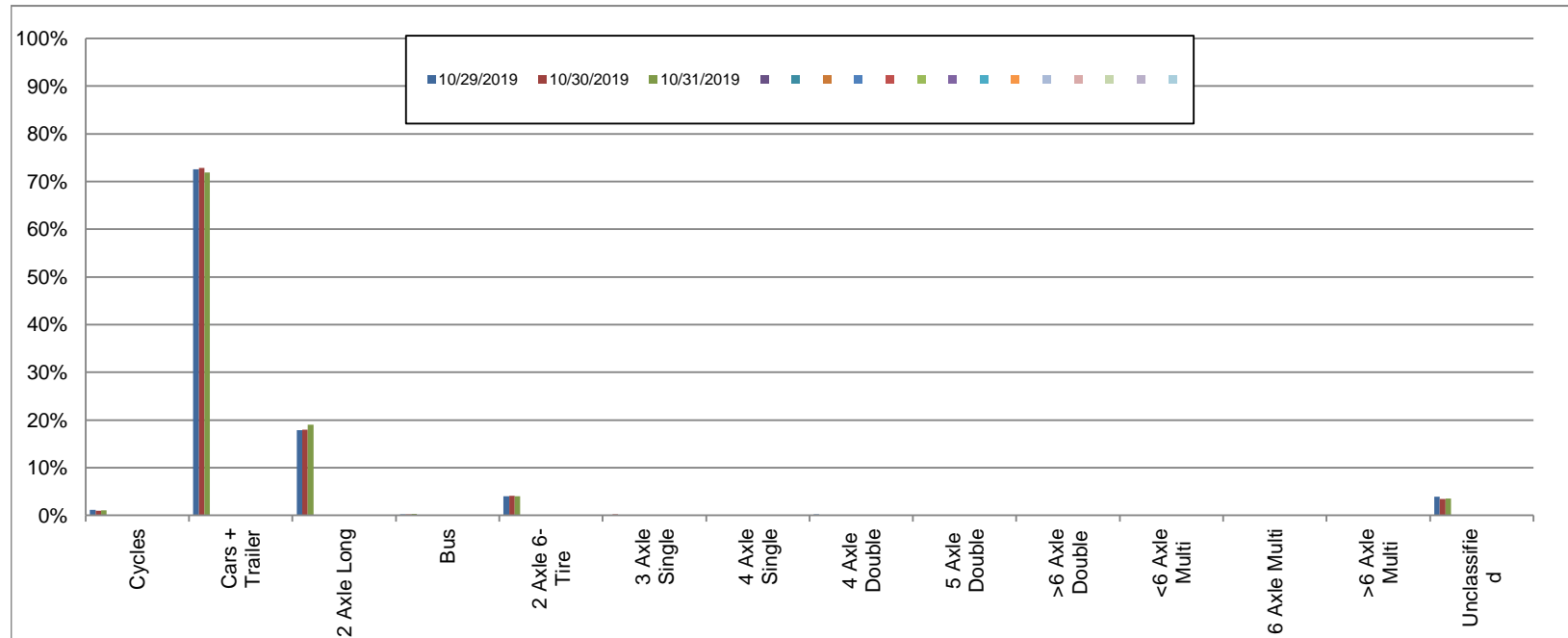
Harriet Rd between Burnside Rd W and Gorge Rd W

Southbound  
October 29, 2019 to October 31, 2019

Daily Class Bin Percentages															Daily Class Bin Volumes														
Bin #	1	2	3	4	5	6	7	8	9	10	11	12	13	14	1	2	3	4	5	6	7	8	9	10	11	12	13	14	Total Volume
Bin Class	Cycles	Cars + Trailer	2 Axle Long	Bus	2 Axle 6-Tire	3 Axle Single	4 Axle Single	4 Axle Double	5 Axle Double	>6 Axle Double	<6 Axle Multi	6 Axle Multi	>6 Axle Multi	Unclassified	Cycles	Cars + Trailer	2 Axle Long	Bus	2 Axle 6-Tire	3 Axle Single	4 Axle Single	4 Axle Double	5 Axle Double	>6 Axle Double	<6 Axle Multi	6 Axle Multi	>6 Axle Multi	Unclassified	
10/29/2019	1.2%	72.6%	17.8%	0.2%	4.0%	0.1%	0.0%	0.2%	0.0%	0.0%	0.0%	0.0%	0.0%	3.9%	52	3242	797	8	179	6	0	8	0	2	0	0	0	173	4467
10/30/2019	1.0%	72.9%	18.0%	0.2%	4.1%	0.2%	0.0%	0.1%	0.0%	0.1%	0.0%	0.0%	0.0%	3.5%	43	3194	789	9	180	7	0	3	1	4	0	0	0	152	4382
10/31/2019	1.0%	71.9%	19.0%	0.3%	4.0%	0.1%	0.0%	0.0%	0.1%	0.0%	0.0%	0.0%	0.0%	3.6%	41	2851	754	11	159	4	0	1	2	1	0	0	0	141	3965
<b>Total</b>	1.1%	72.5%	18.3%	0.2%	4.0%	0.1%	0.0%	0.1%	0.0%	0.1%	0.0%	0.0%	0.0%	3.6%	136	9287	2340	28	518	17	0	12	3	7	0	0	0	466	12814

Class Data Summary

Bin #	1	2	3	4	5	6	7	8	9	10	11	12	13	14	Total Volume
Bin Class	Cycles	Cars + Trailer	2 Axle Long	Bus	2 Axle 6-Tire	3 Axle Single	4 Axle Single	4 Axle Double	5 Axle Double	>6 Axle Double	<6 Axle Multi	6 Axle Multi	>6 Axle Multi	Unclassified	Total Volume
<b>Survey Total</b>	136	9287	2340	28	518	17	0	12	3	7	0	0	0	466	12814
<b>% Total</b>	1.1%	72.5%	18.3%	0.2%	4.0%	0.1%	0.0%	0.1%	0.0%	0.1%	0.0%	0.0%	0.0%	3.6%	100%
<b>Accumulated %</b>	1.1%	73.5%	91.8%	92.0%	96.1%	96.2%	96.2%	96.3%	96.3%	96.4%	96.4%	96.4%	96.4%	100.0%	
<b>Inv. Accum. %</b>	98.9%	26.5%	8.2%	8.0%	3.9%	3.8%	3.8%	3.7%	3.7%	3.6%	3.6%	3.6%	3.6%	0.0%	



Classification Descriptions

Bin #	Bin Description
1	Motorcycles
2	Passenger cars, including those with recreational trailers
3	2-axle pick-ups, vans, and RVs, including those with recreational trailers
4	Buses
5	2-axle, 6-tire single units
6	3-axle single units
7	4-axle single units
8	3-axle or 4-axle double unit
9	5-axle double unit
10	6-, 7-, or 8-axle double unit
11	5-axle multiple unit
12	6-axle multiple unit
13	7-or-more-axle multiple unit
14	Vehicles that could not be classified

Site notes: